

Dichotomous Key

What type of animal is it?



It has a backbone.

It is an endotherm.

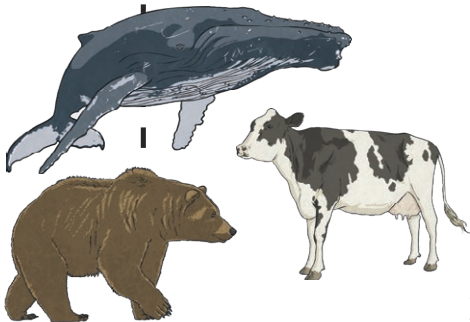
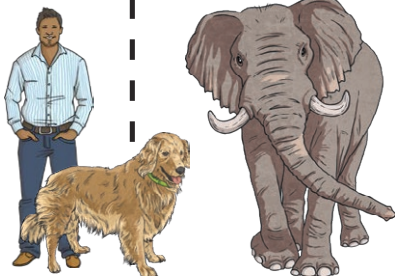
It is an ectotherm.

It has no feathers.

It's a mammal.

It has feathers.

It's a bird.



It lives on land.

It lives in the ocean.

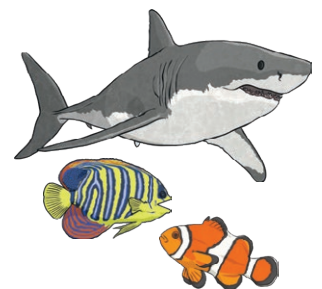
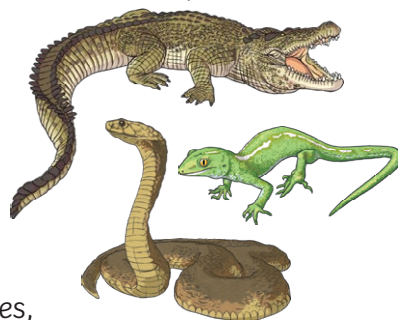
It's a fish.

It has scales.

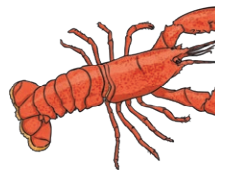
It's a reptile.

It has slimy skin.

It's an amphibian.



It is an invertebrate.



This is a group with a wide variety of species, including:

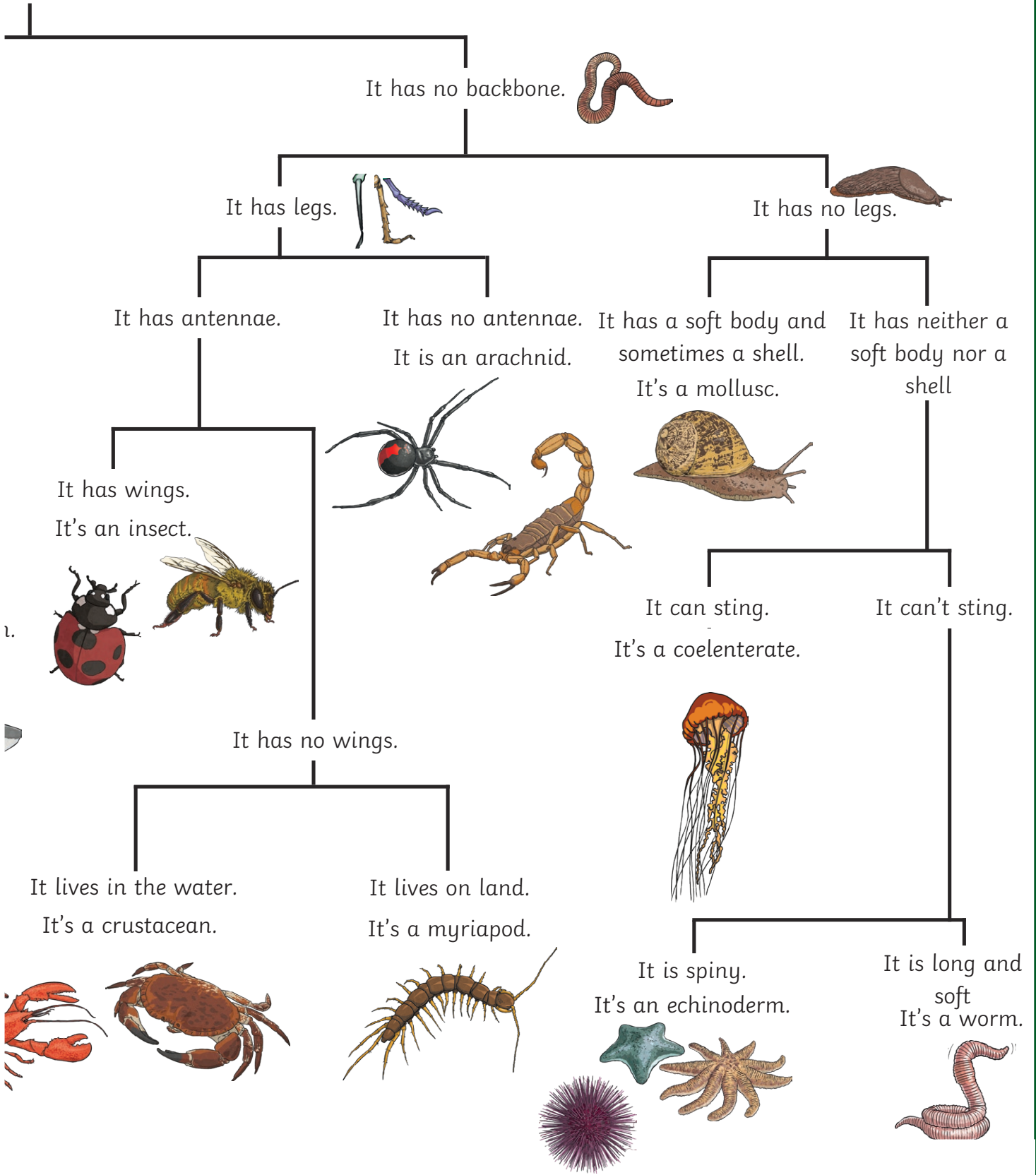
marsupials, that have a pouch.

monotremes, that lay eggs.



Key for Animals

What animal is that?



Dichotomous Key for Animals

What type of animal is that?

